

Computer Based Examination System

| | |
|---------------|---|
| Exported On * | 2025/03/03 11:59:11 |
| Title * | Question Paper Answer Key |
| OES Exam * | GPSC10202406 / Assistant Professors in Government College in Chemistry(organic)/ Completed / 2025-03-02 |

1

Question Description

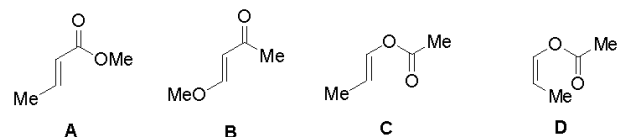
An organic compound **Q** exhibited the following spectral data:

IR: 1760 cm⁻¹

¹H NMR: δ (ppm): 7.05 (1H, d, $J = 10.1$ Hz), 5.1 (1 H, m), 2.12 (3 H, s), 1.95 (3H, d, $J = 7.0$ Hz)

¹³C NMR: δ (ppm): 170 (carbonyl carbon).

Compound **Q** is



| | |
|----------|-------------------|
| A | A |
| B | B |
| C | C |
| D | D |
| E | None of the above |

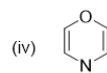
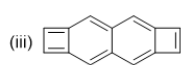
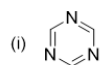
Correct Answer D

Marks 1

2

Question Description

Which of the following species is/are aromatic in nature?



A) i & ii

(B) i, ii & iii

(C) i, ii & iv

(D) i, iii & iv

A

A

B

B

C

C

D

D

E

None of the above

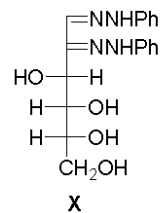
Correct Answer

B

Marks

1

3

Question DescriptionThe osazone **X** could be obtained from

A) Glucose and Fructose;

B) Glucose and Mannose;

C) Mannose and Galactose;

D) Galactose and Fructose

A A

B B

C C

D D

E None of the above

Correct Answer B**Marks** 1

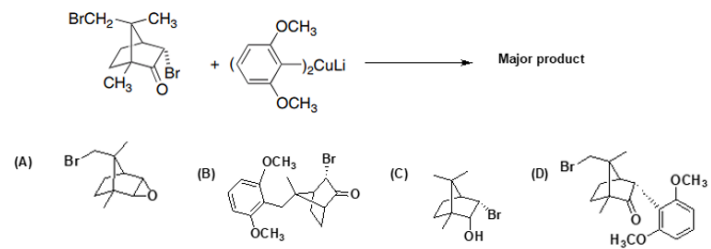
4

| | |
|-----------------------------|--|
| Question Description | The major product formed when indole is treated with CHCl_3 and aqueous KOH is _____. |
| A | 2-chloro indole |
| B | 3-chloroquinoline |
| C | 2-chloroquinoline |
| D | 3-chloroindole |
| E | None of the above |
| Correct Answer | B |
| Marks | 1 |

5

Question Description

Identify the correct structure of the major product formed in the given reaction.



A

A

B

B

C

C

D

D

E

None of the above

Correct Answer

D

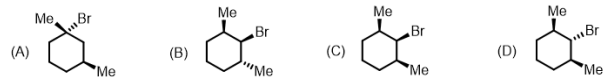
Marks

1

6

Question Description

Which one of the following undergoes would provide (*R*)-1,3-dimethylcyclohex-1-ene as major product on heating with alcoholic KOH?



A A

B B

C C

D D

E None of the above

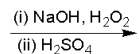
Correct Answer B

Marks 1

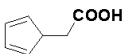
7

Question Description

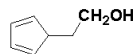
The major product formed in the given reaction is _____



(A)



(B)



(C)



(D)



A

A

B

B

C

C

D

D

E

None of the above

Correct Answer

C

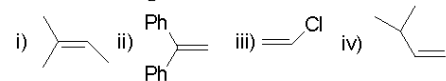
Marks

1

8

Question Description

The increasing order for the ease of HI addition on the following compounds is



- (A) iii < iv < i < ii,
 (B) ii < i < iii < iv,
 (C) i < iv < ii < iii,
 (D) ii < i < iv < iii

A A

B B

C C

D D

E None of the above

Correct Answer A

Marks 1

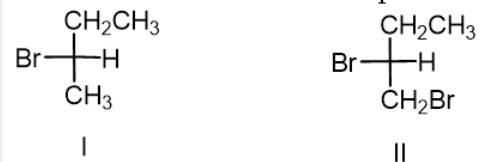
9

| | |
|-----------------------------|--|
| Question Description | In the Chichibabin reaction of pyridine, _____ forms as the major product. |
| A | 2-Amino pyridine |
| B | 3-Amino pyridine |
| C | 2-hydroxy pyridine |
| D | 2,6 dihydroxy pyridine |
| E | None of the above |
| Correct Answer | A |
| Marks | 1 |

10

Question Description

The correct statement for the pair of compounds I and II is



- (A) Both have same relative and same absolute configuration
(B) Both have different relative and different absolute configuration
(C) Both have different relative and same absolute configuration
(D) Both have same relative and different absolute configuration

A

A

B

B

C

C

D

D

E

None of the above

Correct Answer

D

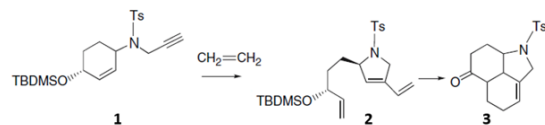
Marks

1

11

Question Description

Fill in the gap. The tricyclic compound **3**, a potential intermediate for alkaloid synthesis, has been prepared by an _____ reaction of the ketone obtained by deprotection and oxidation of **2**. Compound **2** was prepared from **1** using _____ chemistry



- (A) Diels Alder reaction; ene-yne metathesis
 (B) [4+2] cycloaddition reaction; ene-ene metathesis
 (C) Diels Alder reaction; [2+2] cycloaddition
 (D) [2+2] cycloaddition; click

A A

B B

C C

D D

E None of the above

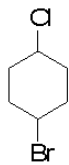
Correct Answer A

Marks 1

12

Question Description

The number of optically active stereoisomers in the following molecule are

**A**

8

B

4

C

2

D

0

E

None of the above

Correct Answer

D

Marks

1

13

| | |
|-----------------------------|--|
| Question Description | The most suitable reagent for the synthesis of m-nitro aniline from m-dinitro benzene is |
| A | Sn/HCl |
| B | FeSO ₄ / NH ₄ OH |
| C | ammonium polysulfide |
| D | H ₂ / Pd-C |
| E | None of the above |
| Correct Answer | C |
| Marks | 1 |

14

Question Description

Calicene or triapentafulvalene is a hydrocarbon of the fulvalene class with chemical formula C_8H_6 , composed of a cyclopentadiene ring and a cyclopropene ring linked by a double bond. Which of the following statements about calicene is correct?

A

It is highly soluble in water.

B

It primarily exists as a dipolar ion, with a positive charge on the three-membered ring and a negative charge on the five-membered ring.

C

It primarily exists as a dipolar ion, with a positive charge on the five-membered ring and a negative charge on the three-membered ring.

D

In solution, it exhibits very high electrical conductivity.

E

None of the above

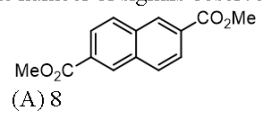
Correct Answer

B

Marks

1

15

Question DescriptionThe number of signals observed in the ^1H NMR signal of the following molecule is

(B) 7

(C) 6

(D) 4

A

A

B

B

C

C

D

D

E

None of the above

Correct Answer

D

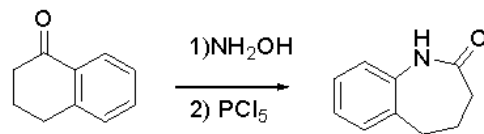
Marks

1

16

Question Description

The following reaction is an example of



- (A) Curtis rearrangement (B) Hoffman rearrangement
(C) Beckman rearrangement (D) Schmidt rearrangement

A

A

B

B

C

C

D

D

E

None of the above

Correct Answer

C

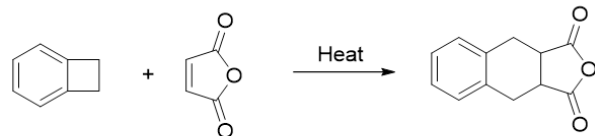
Marks

1

17

Question Description

The product of the following pericyclic reaction is formed via _____.



- (A) Sigmatropic rearrangement followed by electrocyclic ring-closing.
 (B) Sigmatropic rearrangement followed by [4+2]-cycloaddition
 (C) Electrocyclic ring-opening followed by [2+2]-cycloaddition
 (D) Electrocyclic ring-opening followed by [4+2]-cycloaddition

A A

B B

C C

D D

E None of the above

Correct Answer D**Marks** 1

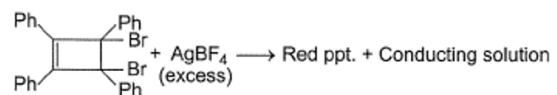
18

| | |
|-----------------------------|---|
| Question Description | The first host-guest complex between cyclodextrin and iodine was synthesized by |
| A | Villiers |
| B | Schardinger |
| C | Cramer |
| D | Lehn |
| E | None of the above |
| Correct Answer | B |
| Marks | 1 |

19

Question Description

When the given compound is treated with excess AgBF_4 , a red precipitate forms, and the filtrate exhibits high conductivity. This observation is best explained by:

**A**

Formation of a dianionic aromatic system

B

Formation of a dicationic aromatic system

C

Formation of a covalent ditetrafluoroborate compound

D

Precipitation of a red-colored aromatic salt

E

None of the above

Correct Answer

B

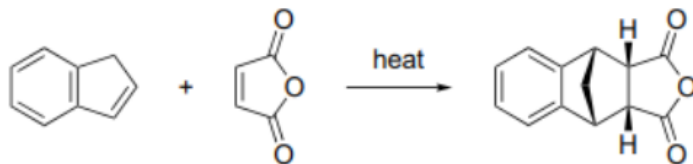
Marks

1

20

Question Description

Fill in the gap: The following reaction proceeds via _____.



A [1,3]-H shift followed by [4+2] cycloaddition

B [1,5]-H shift followed by [4+2] cycloaddition

C [3+2] cycloaddition followed by H shift

D [4+2] cycloaddition followed by alkyl shift

E None of the above

Correct Answer B

Marks 1

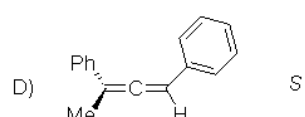
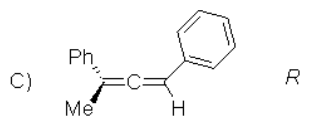
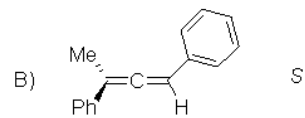
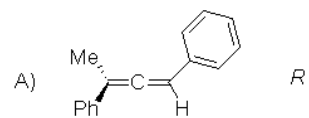
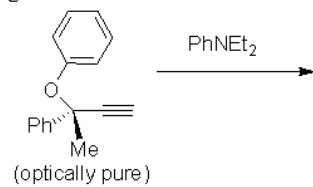
21

| | |
|-----------------------------|---|
| Question Description | In a 400 MHz ^1H NMR spectrum, 1-bromoprop-1-ene exhibited a doublet at around 6.15 ppm. The two lines of the doublet appeared at \square 6.1627 and \square 6.1372 ppm. What is the coupling constant (J) value and which geometrical isomer is this? |
| A | 15.6 Hz, trans- |
| B | 7.6 Hz, trans- |
| C | 10.2 Hz, cis- |
| D | 0.025 Hz, cis- |
| E | None of the above |
| Correct Answer | C |
| Marks | 1 |

22

Question Description

In the following sigmatropic rearrangement the structure of the allene formed and its configuration are



A

A

B

B

C

C

D

D

E

None of the above

Correct Answer

D

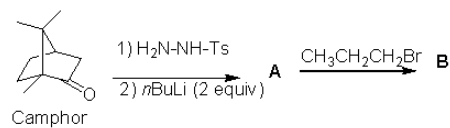
Marks

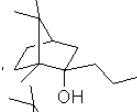
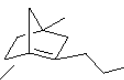
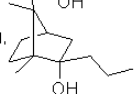
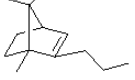
1

23

Question Description

In the following two-step transformation, the first step is called _____ and the final product **B** will be



- A) Gillman reaction, 
 B) Wittig rearrangement, 
 C) Negishi coupling, 
 D) Shapiro reaction, 

A A

B B

C C

D D

E None of the above

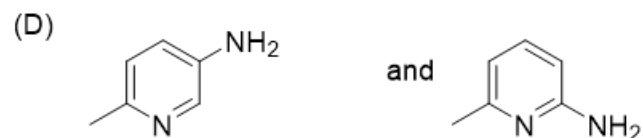
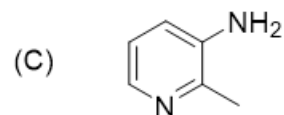
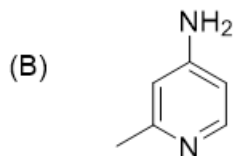
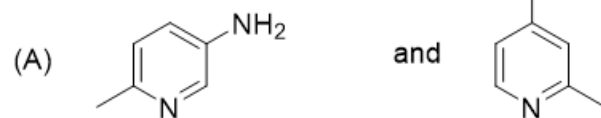
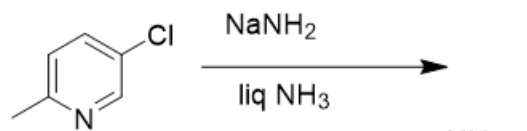
Correct Answer D

Marks 1

24

Question Description

The major product(s) formed in the following reaction is (are)



A

A

B

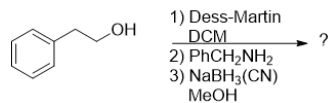
B

| | |
|-----------------------|-------------------|
| C | C |
| D | D |
| E | None of the above |
| Correct Answer | A |
| Marks | 1 |

25

Question Description

Identify the correct product for the following reaction:



A) PhCH2CH2N(H)CH2Ph B) PhCH2C(H)=NCH2Ph C) PhCH2CH2OCH2Ph D) PhCH2CH2N=C(H)Ph

A

A

B

B

C

C

D

D

E

None of the above

Correct Answer

A

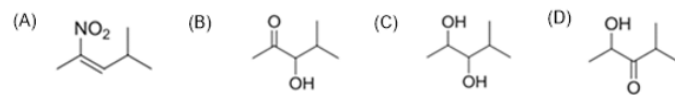
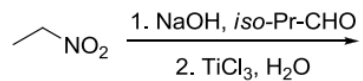
Marks

1

26

Question Description

The major product formed in the following reaction is _____



A

A

B

B

C

C

D

D

E

None of the above

Correct Answer

B

Marks

1

27

| | |
|-----------------------------|---|
| Question Description | An enantioselective reaction predominantly yields (-)-2-bromobutane with 10% contamination of (+)-2-bromobutane. If the specific rotation of (+)-2-bromobutane is $+23.13^\circ$, the observed specific rotation of a sample of the product mixture would be |
| A | -20.8° |
| B | -18.5° |
| C | $+20.8^\circ$ |
| D | $+4.6^\circ$ |
| E | None of the above |
| Correct Answer | B |
| Marks | 1 |

28

Question DescriptionThe number of ^1H NMR signals observed for the below-mentioned compound is _____**A**

3

B

4

C

5

D

6

E

None of the above

Correct Answer

B

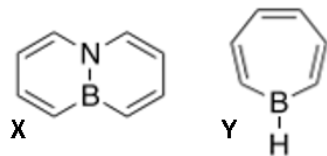
Marks

1

29

Question Description

Identify the given compounds as aromatic/non-aromatic/antiaromatic.



- A** X and Y are aromatic
- B** X and Y are antiaromatic
- C** X is aromatic and Y is nonaromatic
- D** X is non-aromatic and Y is aromatic
- E** None of the above

Correct Answer

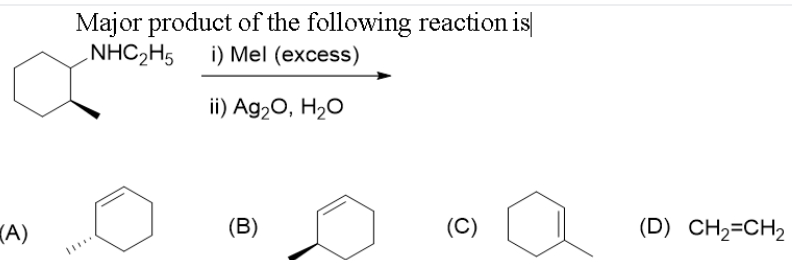
A

Marks

1

30

Question Description



A

A

B

B

C

C

D

D

E

None of the above

Correct Answer

D

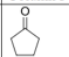
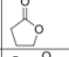

Marks

1

31

Question Description

Correct match of the compounds in Column P with the IR stretching frequencies (cm^{-1}) in Column Q is

| | Column P | Column Q |
|-----|---|----------|
| I |  | A 1865 |
| II |  | B 1770 |
| III |  | C 1745 |

(A) I - B; II - C; III - A;

(B) I - C; II - A; III - B;

(C) I - C; II - B; III - A;

(D) I - A; II - C; III - B

A

A

B

B

C

C

D

D

E

None of the above

Correct Answer

C

Marks

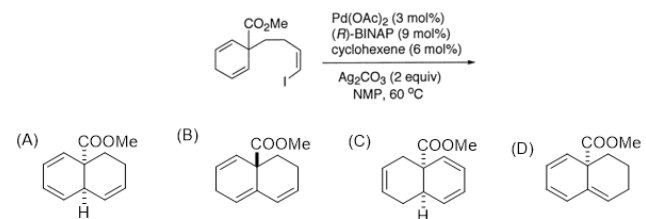
1

32

Question Description

The major product formed from the intramolecular Heck reaction of the given compound will be

_____.



A

A

B

B

C

C

D

D

E

None of the above

Correct Answer

A

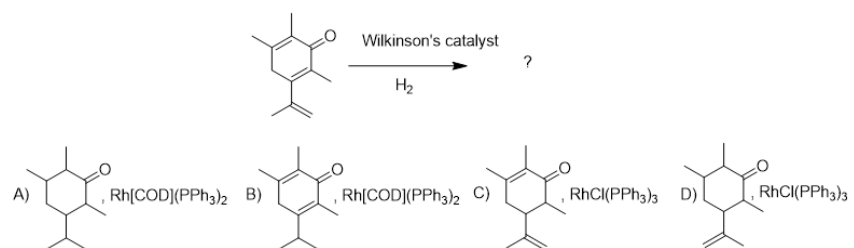
Marks

1

33

Question Description

The major product and the right choice of catalyst for the following reaction are



A

A

B

B

C

C

D

D

E

None of the above

Correct Answer

B

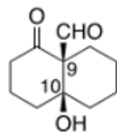
Marks

1

34

Question Description

The absolute configuration of the stereogenic centres present in the following molecules is

**A***9R, 10S***B***9R, 10R***C***9S, 10S***D***9R, 10R***E**

None of the above

Correct Answer

A

Marks

1

35

| | |
|-----------------------------|---|
| Question Description | The ^1H NMR spectrum of a mixture of chloroform and acetone exhibits two singlets at $\delta 7.25$ and $\delta 2.1$ ppm, corresponding to integral values of 12 mm and 18 mm, respectively. Based on this data, determine the molar ratio of chloroform to acetone in the mixture. |
| A | 1:6 |
| B | 3:2 |
| C | 1:3 |
| D | 4:1 |
| E | None of the above |
| Correct Answer | D |
| Marks | 1 |

36

Question DescriptionHow many signals you can see in the ^1H and ^{13}C NMR spectra of the given compound?**A**

6 and 5

B

7 and 5

C

6 and 8

D

7 and 8

E

None of the above

Correct Answer

A

Marks

1

37

Question Description

In an enantioselective reaction, (+)-2-bromobutane is obtained as the major product with 10% contamination of (-)-2-bromobutane. Given that the specific rotation of (-)-2-bromobutane is -23.13° , what would be the observed specific rotation of the resulting product mixture?

A -20.8° **B** $+18.5^\circ$ **C** $+20.8^\circ$ **D** -4.6° **E**

None of the above

Correct Answer

B

Marks

1

38

Question Description

The decreasing order of stability of carbocations
 $\text{CH}_3\text{-CH}^+\text{-CH=CH}_2$ (i); $(\text{CH}_3)_2\text{CH}^+$ (ii) and $(\text{CH}_3)_2\text{C}^+\text{-CH=CH}_2$ (iii) is
A) $\text{iii} > \text{ii} > \text{i}$, B) $\text{i} > \text{ii} > \text{iii}$; C) $\text{ii} > \text{i} > \text{iii}$, D) $\text{iii} > \text{i} > \text{ii}$.

A

A

B

B

C

C

D

D

E

None of the above

Correct Answer

A

Marks

1

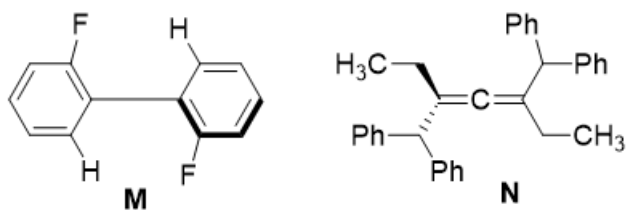
39

| | |
|-----------------------------|---|
| Question Description | Perkin reaction of Salicylaldehyde gives _____ as the product |
| A | Cinnamylacrylic acid |
| B | Chrysin |
| C | Furylacrylic acid |
| D | Coumarin |
| E | None of the above |
| Correct Answer | D |
| Marks | 1 |

40

Question Description

Choose the correct option



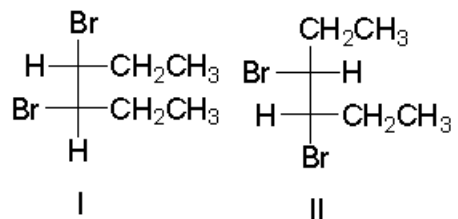
- A** Both M and N are optically active
- B** M can be optically active but not N
- C** N can be optically active but not M
- D** Both M and N are optically inactive.
- E** None of the above

Correct Answer C**Marks** 1

41

Question Description

The following compounds I & II are
 (A) identical molecules
 (B) a pair of enantiomers
 (C) a pair of or diastereomers
 (D) constitutional isomers.



A A

B B

C C

D D

E None of the above

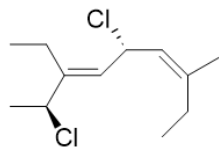
Correct Answer C

Marks 1

42

Question Description

The IUPAC name of the following molecule is



- A) (3Z,6E,2R,5S)-2,5-Dichloro-3-ethyl-7-methyl-nona-3,6-diene
- B) (3E,6Z,2S,5S)-2,5-Dichloro-3-ethyl-7-methyl-nona-3,6-diene
- C) (3Z,6E,2S,5R)-2,5-Dichloro-3-ethyl-7-methyl-nona-3,6-diene
- D) (3E,6Z,2S,5R)-2,5-Dichloro-3-ethyl-7-methyl-nona-3,6-diene

A A

B B

C C

D D

E None of the above

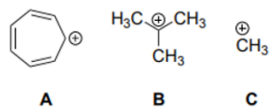
Correct Answer D

Marks 1

43

Question Description

In the gas phase, determine the correct order of hydride affinity for the given carbocations.

**A**

A > C > B

B

B > C > A

C

C > B > A

D

C > A > B

E

None of the above

Correct Answer

C

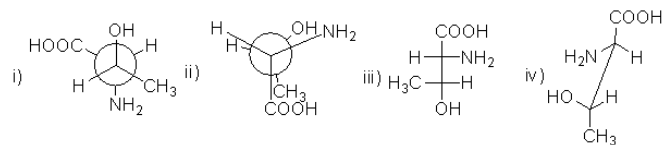
Marks

1

44

Question Description

Among the following compounds out a pair of [a] enantiomers and [b] diastereomers are _____ and _____, respectively.



- A) [a] (i) & (iii), and [b] (i) & (ii), B) [a] (i) & (iv), and [b] (i) & (iii),
 C) [a] (i) & (ii), and [b] (ii) & (iv), D) [a] (i) & (iv), and [b] (ii) & (iii),

| | |
|-----------------------|-------------------|
| A | A |
| B | B |
| C | C |
| D | D |
| E | None of the above |
| Correct Answer | C |
| Marks | 1 |

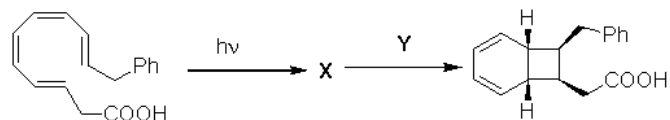
45

| | |
|-----------------------------|--|
| Question Description | The ^{14}C dating method is not usually used for dating organic substance older than ~60,000 years, because |
| A | Such objects accumulated ^{14}C after their formation. |
| B | In those time there was no existence of ^{14}C . |
| C | Most of the ^{14}C in the sample would have decayed |
| D | Such objects rarely contain carbon. |
| E | None of the above |
| Correct Answer | C |
| Marks | 1 |

46

Question Description

In the following pericyclic reaction X and Y are



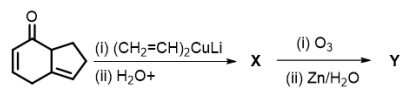
- | <u>X</u> | <u>Y</u> | <u>X</u> | <u>Y</u> |
|----------|---------------------|----------|---------------------|
| A) | $h\nu/\text{DIS}$ | B) | $h\nu/\text{CON}$ |
| C) | Δ/DIS | D) | Δ/CON |

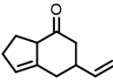
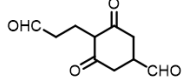
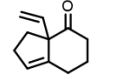
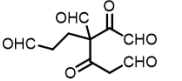
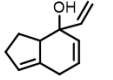
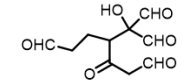
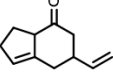
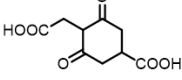
| | |
|-----------------------|-------------------|
| A | A |
| B | B |
| C | C |
| D | D |
| E | None of the above |
| Correct Answer | C |
| Marks | 1 |

47

Question Description

In the following reaction the correct structures of **X** and **Y** respectively are



- (A)  and 
- (B)  and 
- (C)  and 
- (D)  and 

A

A

B

B

C

C

D

D

E

None of the above

Correct Answer

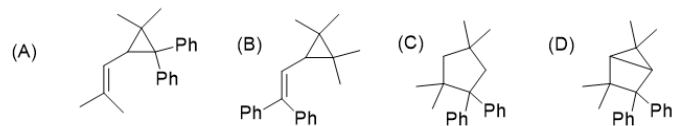
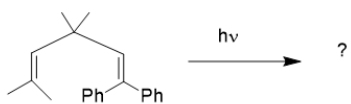
A

Marks

1

Question Description

Predict the major product of the following reaction.



A

A

B

B

C

C

D

D

E

None of the above

Correct Answer

A

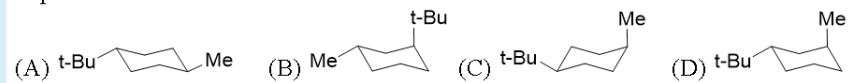
Marks

1

49

Question Description

Which among the following chair conformation of the disubstituted cyclohexane is quite improbable to achieve?



A

A

B

B

C

C

D

D

E

None of the above

Correct Answer

B

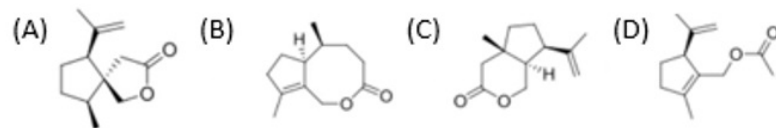
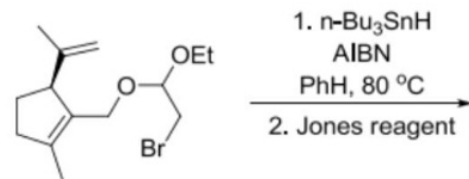
Marks

1

50

Question Description

Predict the major product of the following reaction.



A A

B B

C C

D D

E None of the above

Correct Answer A

Marks 1

51

Comprehension

Read the following passage and answer the questions given below it:-

If we wish to do with war, we must provide for the settlement of national differences by an international court. This court should be in perpetual session; its members should be selected by the various Governments to be affected by its decisions, and, at the command and disposal of this court, the rest of Christendom being disarmed, there should be a military force sufficient to carry its judgement into effect. There should be no other excuse, no other business for an army or a navy in the civilized world. No man has imagination enough to paint the agonies, the horrors, and cruelties of war. Think of sending shot and shell crashing through the bodies of men!

Question Description

Identify the word or phrase from the passage that implies “ continuous or recurring conduct of business”

A

international court

B

army or navy in the civilized world

C

perpetual session

D

carry its judgement into effect

E

None of the above

Correct Answer

C

Marks

1

Comprehension

Read the following passage and answer the questions given below it:-

If we wish to do with war, we must provide for the settlement of national differences by an international court. This court should be in perpetual session; its members should be selected by the various Governments to be affected by its decisions, and, at the command and disposal of this court, the rest of Christendom being disarmed, there should be a military force sufficient to carry its judgement into effect. There should be no other excuse, no other business for an army or a navy in the civilized world. No man has imagination enough to paint the agonies, the horrors, and cruelties of war. Think of sending shot and shell crashing through the bodies of men!

Question Description

Find a phrase that means "sending shot and shell crashing through bodies of men!"

A

firing bullets and lobbing grenades

B

shooting arrows in the dark

C

firing bullets and shooting water hoses

D

bombing unarmed men

E

None of the above

Correct Answer

A

Marks

1

53

Comprehension

Read the following passage and answer the questions given below it:-

If we wish to do with war, we must provide for the settlement of national differences by an international court. This court should be in perpetual session; its members should be selected by the various Governments to be affected by its decisions, and, at the command and disposal of this court, the rest of Christendom being disarmed, there should be a military force sufficient to carry its judgement into effect. There should be no other excuse, no other business for an army or a navy in the civilized world. No man has imagination enough to paint the agonies, the horrors, and cruelties of war. Think of sending shot and shell crashing through the bodies of men!

Question Description

Which of the following is implied by "its" in the statement "the military force is expected to carry the its judgement into effect"

A

the government of the day

B

the civilized world

C

Christendom

D

the international court

E

None of the above

Correct Answer

D

Marks

1

54

Comprehension

Read the following passage and answer the questions given below it:-

If we wish to do with war, we must provide for the settlement of national differences by an international court. This court should be in perpetual session; its members should be selected by the various Governments to be affected by its decisions, and, at the command and disposal of this court, the rest of Christendom being disarmed, there should be a military force sufficient to carry its judgement into effect. There should be no other excuse, no other business for an army or a navy in the civilized world. No man has imagination enough to paint the agonies, the horrors, and cruelties of war. Think of sending shot and shell crashing through the bodies of men!

Question Description

The passage implies that the only task or function for the forces in a civilized world should be only

A

to impeach the governments that defy the international courts

B

to ensure that the court is in perpetual session

C

to effectively implement the decisions of the international court

D

to make sure that the rest of Christendom is disarmed

E

None of the above

Correct Answer

C

Marks

1

Comprehension

Read the following passage and answer the questions given below it:-

If we wish to do with war, we must provide for the settlement of national differences by an international court. This court should be in perpetual session; its members should be selected by the various Governments to be affected by its decisions, and, at the command and disposal of this court, the rest of Christendom being disarmed, there should be a military force sufficient to carry its judgement into effect. There should be no other excuse, no other business for an army or a navy in the civilized world. No man has imagination enough to paint the agonies, the horrors, and cruelties of war. Think of sending shot and shell crashing through the bodies of men!

Question Description

No man has imagination enough to paint the agonies, the horrors, and cruelties of war.” This sentence can be correctly re-written as

- A** Every man lacks adequate imagination not to paint the agonies, the horrors, and cruelties of war.
- B** All men lack adequate imagination to paint the agonies, the horrors, and cruelties of war.
- C** Some men lack adequate imagination to paint the agonies, the horrors, and cruelties of war.
- D** All men do not lack the imagination enough to paint the agonies, the horrors, and cruelties of war.
- E** None of the above

Correct Answer

B

Marks

1

| | | |
|----|-----------------------------|-------------------------------------|
| 56 | Question Description | When is World Radio Day celebrated? |
| | A | January 25 |
| | B | February 10 |
| | C | February 13 |
| | D | March 5 |
| | E | None of the above |
| | Correct Answer | C |
| | Marks | 1 |

| | | |
|----|-----------------------------|--|
| 57 | Question Description | How many new languages have been added to the Lok Sabha translation service? |
| | A | 4 |
| | B | 5 |
| | C | 6 |
| | D | 7 |
| | E | None of the above |
| | Correct Answer | C |
| | Marks | 1 |

| | | |
|----|-----------------------------|---|
| 58 | Question Description | What was the theme for Republic Day 2025? |
| | A | Unity in Diversity |
| | B | Golden India: Heritage and Progress |
| | C | Vibrant India: Growth and Harmony |
| | D | India@75: Glory and Aspirations |
| | E | None of the above |
| | Correct Answer | B |
| | Marks | 1 |

| | | |
|----|-----------------------------|--|
| 59 | Question Description | Who recently became India's top-ranked chess player and 4th globally in the FIDE rankings? |
| | A | Viswanathan Anand |
| | B | Arjun Erigaisi |
| | C | D Gukesh |
| | D | Praggnanandhaa |
| | E | None of the above |
| | Correct Answer | C |
| | Marks | 1 |

60

| | |
|-----------------------------|--|
| Question Description | Until which year has the Jal Jeevan Mission (JJM) been extended? |
| A | 2025 |
| B | 2026 |
| C | 2030 |
| D | 2028 |
| E | None of the above |
| Correct Answer | D |
| Marks | 1 |

61

| | |
|-----------------------------|---|
| Question Description | Which state will establish India's first AI university? |
| A | Karnataka |
| B | Tamil Nadu |
| C | Gujarat |
| D | Maharashtra |
| E | None of the above |
| Correct Answer | D |
| Marks | 1 |

62

| | |
|-----------------------------|---|
| Question Description | In which state has the WhatsApp-based governance platform 'Mana Mitra' been launched? |
| A | Maharashtra |
| B | Tamil Nadu |
| C | Karnataka |
| D | Andhra Pradesh |
| E | None of the above |
| Correct Answer | D |
| Marks | 1 |

63

| | |
|-----------------------------|--|
| Question Description | Where was the Sci-Fi Science Film Festival of India inaugurated in 2025? |
| A | Mumbai |
| B | Panaji |
| C | Bangalore |
| D | Pune |
| E | None of the above |
| Correct Answer | B |
| Marks | 1 |

| | | |
|----|-----------------------------|---|
| 64 | Question Description | Which city has been announced as the second capital of Assam? |
| | A | Dibrugarh |
| | B | Guwahati |
| | C | Jorhat |
| | D | Tezpur |
| | E | None of the above |
| | Correct Answer | A |
| | Marks | 1 |

| | | |
|----|-----------------------------|---|
| 65 | Question Description | Who has been appointed as the new BCCI Secretary? |
| | A | Jay Shah |
| | B | Prabhtej Singh Bhatia |
| | C | Sourav Ganguly |
| | D | Devajit Saikia |
| | E | None of the above |
| | Correct Answer | D |
| | Marks | 1 |

| | | |
|----|-----------------------------|-----------------------|
| 66 | Question Description | Find the odd one out: |
| | A | Piano |
| | B | Guitar |
| | C | Violin |
| | D | Flute |
| | E | None of the above |
| | Correct Answer | D |
| | Marks | 1 |

| | | |
|----|-----------------------------|--|
| 67 | Question Description | Which part is essential for a book to be understood? |
| | A | Title |
| | B | Pages |
| | C | Content |
| | D | Cover |
| | E | None of the above |
| | Correct Answer | C |
| | Marks | 1 |

68

Question Description

What will be the 6th term in the series?
Z, W, T, Q, N, ____

A

K

B

L

C

M

D

O

E

None of the above

Correct Answer

A

Marks

1

69

Question Description

Statement: "The recent increase in crime rates is primarily due to a lack of adequate policing."

Conclusion:

1. The government needs to increase the number of police officers.
2. The increase in crime is directly correlated with the number of police officers.

A

Only conclusion 1 is valid.

B

Only conclusion 2 is valid.

C

Both conclusions are valid.

D

Neither conclusion is valid.

E

None of the above

Correct Answer

A

Marks

1

| | | |
|----|-----------------------------|--|
| 70 | Question Description | Which word matches the following definition: "A large destructive wave caused by an earthquake." |
| | A | Tsunami |
| | B | Cyclone |
| | C | Tornado |
| | D | Earthquake |
| | E | None of the above |
| | Correct Answer | A |
| | Marks | 1 |

| | | |
|----|-----------------------------|---|
| 71 | Question Description | Which of the following completes the series? 4, 13, 40, 121, 364, ____ |
| | A | 1093 |
| | B | 1024 |
| | C | 1125 |
| | D | 1300 |
| | E | None of the above |
| | Correct Answer | A |
| | Marks | 1 |

| | | |
|----|-----------------------------|---|
| 72 | Question Description | Find the relationship: MOUSE : CHEESE :: CAT : ? |
| | A | Dog |
| | B | Milk |
| | C | Fish |
| | D | Mouse |
| | E | None of the above |
| | Correct Answer | C |
| | Marks | 1 |

| | | |
|----|-----------------------------|---------------------------------|
| 73 | Question Description | Rain is to cloud as fire is to: |
| | A | Smoke |
| | B | Ash |
| | C | Heat |
| | D | Wood |
| | E | None of the above |
| | Correct Answer | A |
| | Marks | 1 |

74

| | |
|-----------------------------|---|
| Question Description | Statement: "The company's profits have increased since implementing the new advertising campaign." Judgment: |
| A | The increase in profits is solely due to the new campaign. |
| B | The increase in profits is unrelated to the new campaign. |
| C | The new campaign may have contributed to the increase in profits. |
| D | The company should stop advertising to maintain profits. |
| E | None of the above |
| Correct Answer | C |
| Marks | 1 |

75

| | |
|-----------------------------|---|
| Question Description | In an artificial language, "KOR" means "food," "TOR" means "water," and "NOR" means "fire." What is the meaning of "KOR TOR"? |
| A | Food water |
| B | Water fire |
| C | Food fire |
| D | Water food |
| E | None of the above |
| Correct Answer | A |
| Marks | 1 |